

A photograph of two women wearing glasses, looking upwards and to the right in a greenhouse filled with green plants. The scene is brightly lit, with sunlight filtering through the glass panels of the structure. A blue circular graphic is overlaid on the top left, containing the text 'ANZ AGRI INFOCUS'.

ANZ AGRI
INFOCUS

**REGIONAL
MAKING A MOVE**

While many of our major cities struggled through Covid-lockdowns and a slump in business activity as a result, Australia's regional economies have had a relatively strong 3 years. With a booming agriculture sector, and the relatively muted impact of Covid in rural and regional areas combined with the rise in numbers moving from major cities to regional and rural areas, regional Australia has seen somewhat of a renaissance. For many, this boom has been heralded as the start of a new wave of growth across our regions, while others see the renewed interest in regional Australia as a result of unusual circumstances which will reverse as businesses return to normal work patterns in major cities.



FOREWORD

The Covid pandemic threw much of the Australian economy, ways of working and supply chains into a tumultuous time. Lack of worker availability, shipping and freight delays, transport woes and lockdowns all typified the Covid period. And while we are now looking at Covid in the rear-vision mirror, the lessons and impacts for regional Australia still linger. The boost in population resulting from remote working and lockdowns across major cities, combined with a booming agriculture sector, and solid growth across employment in regional Australia has been heralded by some as the start of a regeneration across regional Australia.

But many questions remain, including whether the Covid pandemic merely highlighted an existing trend, or whether remote working will change the nature of employment in the regions in the long-term? What is motivating the increase in people moving to regional cities? And how does regional Australia ensure that the momentum and interest garnered during Covid is not lost as Australia's major cities return to 'business as usual'?

Data on population trends across the Covid period do highlight the fact that population growth in the 'regions' is not being reflected across all regional areas – in fact population growth is strongest in regional cities, but going backwards in remote areas. Also of interest is that regional population growth is strongest in the smaller, more densely populated States of Victoria, South Australia and Tasmania.

It seems clear that the growth in population in regional Australia cannot be solely attributed to a change in Australian's desire to live in the country, and that regional cities are importantly and increasingly being seen as a viable alternative to major cities based on access of lifestyle, health and education services, remote working and transport.


Behind the headline regional population boom over the Covid period, there are signs that the growth in regional Australia is a longer-term trend, with stronger growth in wages in regional Australia over the 5 years before Covid than in major cities, strong house price growth in the regions of denser populated States and very solid production and growth in key regional industries, most particularly, agriculture.

While the impacts of Covid are likely to fade in time, it is likely that regional Australia will be left with solid momentum for growth, and a renewed attractiveness for many for regional living. The next question becomes whether access to services, infrastructure and expertise in the regions will keep up with the expectations and requirements of new residents and growing industries.



Mark Bennett

Head of Agribusiness & Specialised Commercial,
Australia Commercial

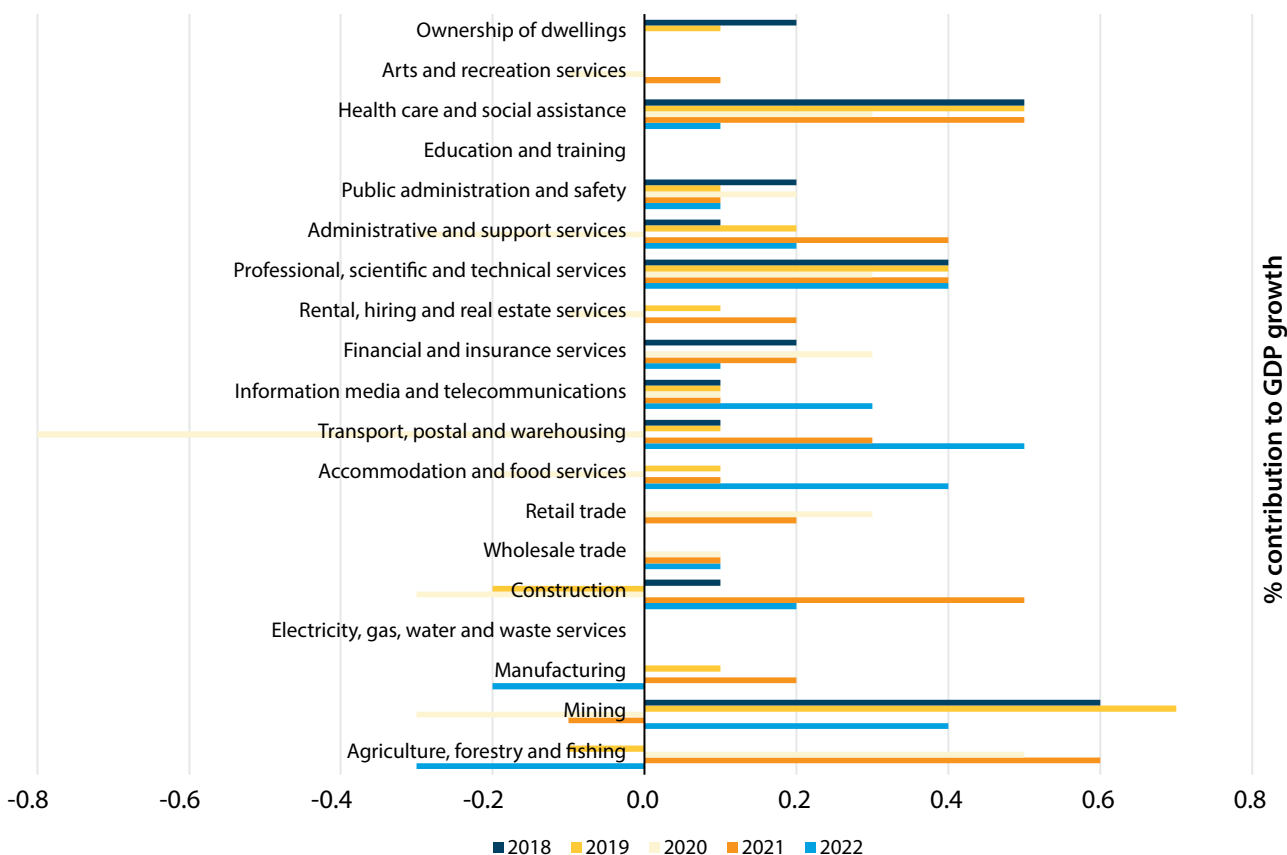
 @bennett2_mark



REGIONAL
**ECONOMIC
ACTIVITY**

The Australian economy suffered significantly through the Covid period with contractions in key sectors such as tourism, transport, trade and construction. The domestic economy suffered significant losses throughout the Covid period, including two distinct downturns after the initial Covid wave and the subsequent delta wave. The Australian Bureau of Statistics estimated that up until late 2022, the Australian economy had lost \$158 billion in GDP as a result of Covid. Across regional Australia, the impact of Covid on economic growth was mixed, with the mining sector remaining stagnant in the two years from 2020, and the agriculture, forestry and fisheries sector performing strongly. During that time, the key regional industries of agriculture and forestry and fisheries combined to contribute almost 1 per cent of Gross Domestic Product (GDP) growth across two years to the national recovery from Covid.

CONTRIBUTION TO AUSTRALIAN GROSS DOMESTIC PRODUCT BY INDUSTRY

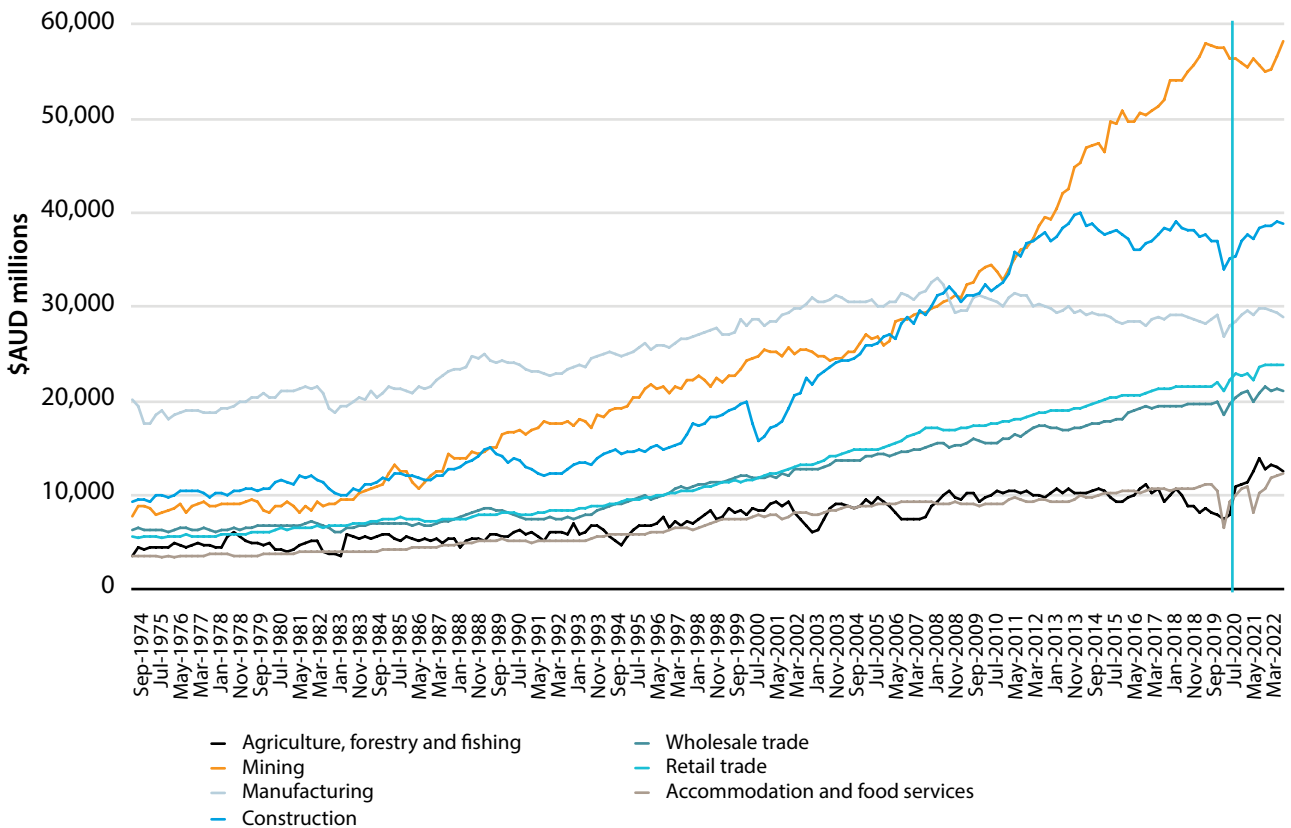


Source: ABS, National Accounts

To put this in perspective, however, while the Australian agriculture sector has had a stellar last 3 years, which provided a much needed boost to the Australian

economy over the Covid period, growth over the longer-term remains small in comparison with the boom in the other major regional sector – mining.

GROSS VALUE ADDED BY INDUSTRY



Source: ABS, National Accounts

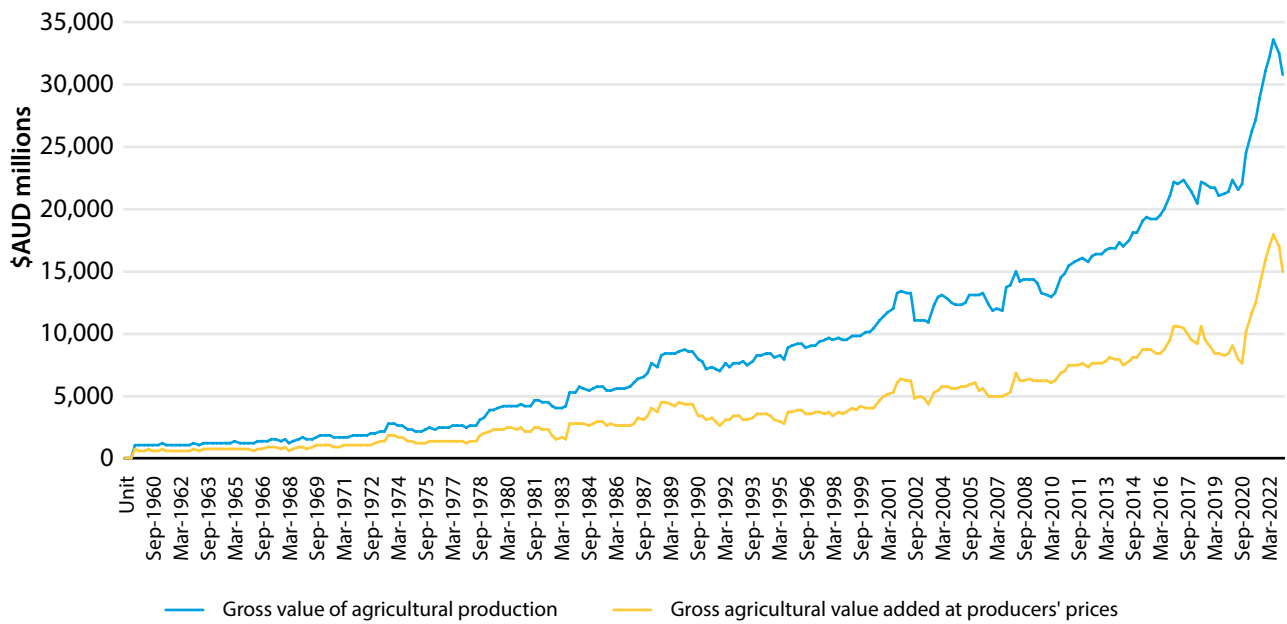
It is no secret that Australian agriculture and export earnings have been going through boom times in recent years – the combination of strong seasons and high global prices have led to unprecedented conditions for most producers. This saw quarterly gross value of agricultural production jump almost 60 per cent in just two years and gross agricultural income (based on current prices) jumped a staggering 250 per cent at the same time before falling in recent quarters.

The impact of high prices and production is not only felt through profits at the producer level, but may also be felt through an increase in revenue to agricultural services and agricultural employees. Going hand in hand with strong global commodity prices has been a hefty increase in the cost of intermediate inputs and lack of availability of seasonal labour pushing up labour costs. So while intermediate input costs increased by 16 per cent in those two years between June 2020 and June 2022 and labour costs rose 13 per cent in the same

time, not all of this increase was returned to regional employees or agricultural services companies – although many large agricultural services companies saw profits jump strongly in 2021.

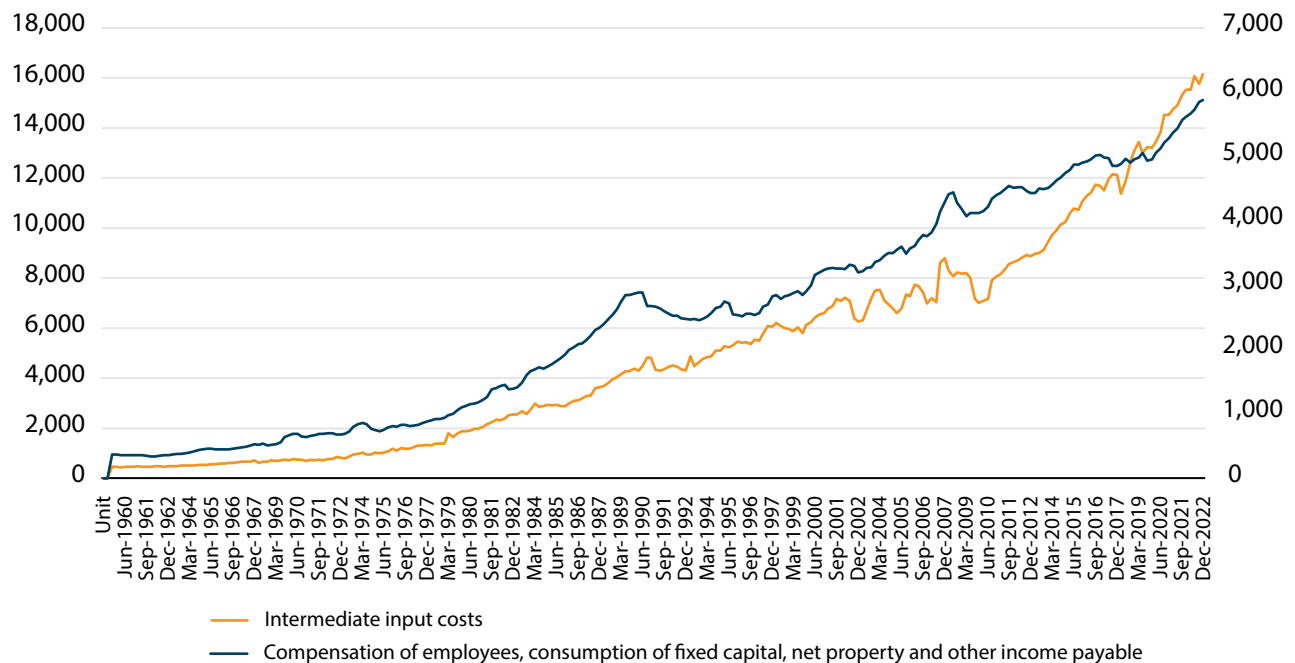
WHILE THE AGRICULTURE SECTOR WAS BOOMING AND PRODUCER RETURNS HAVE BEEN THE HIGHEST THEY HAVE BEEN IN RECENT MEMORY - THE IMPACT OF THE AGRICULTURAL BOOM ON AUSTRALIA'S RURAL AND REGIONAL ECONOMIES IS UNCLEAR.

AGRICULTURAL INCOME, QUARTERLY



Source: ABS, National Accounts

AGRICULTURAL COSTS, QUARTERLY



Source: ABS, National Accounts

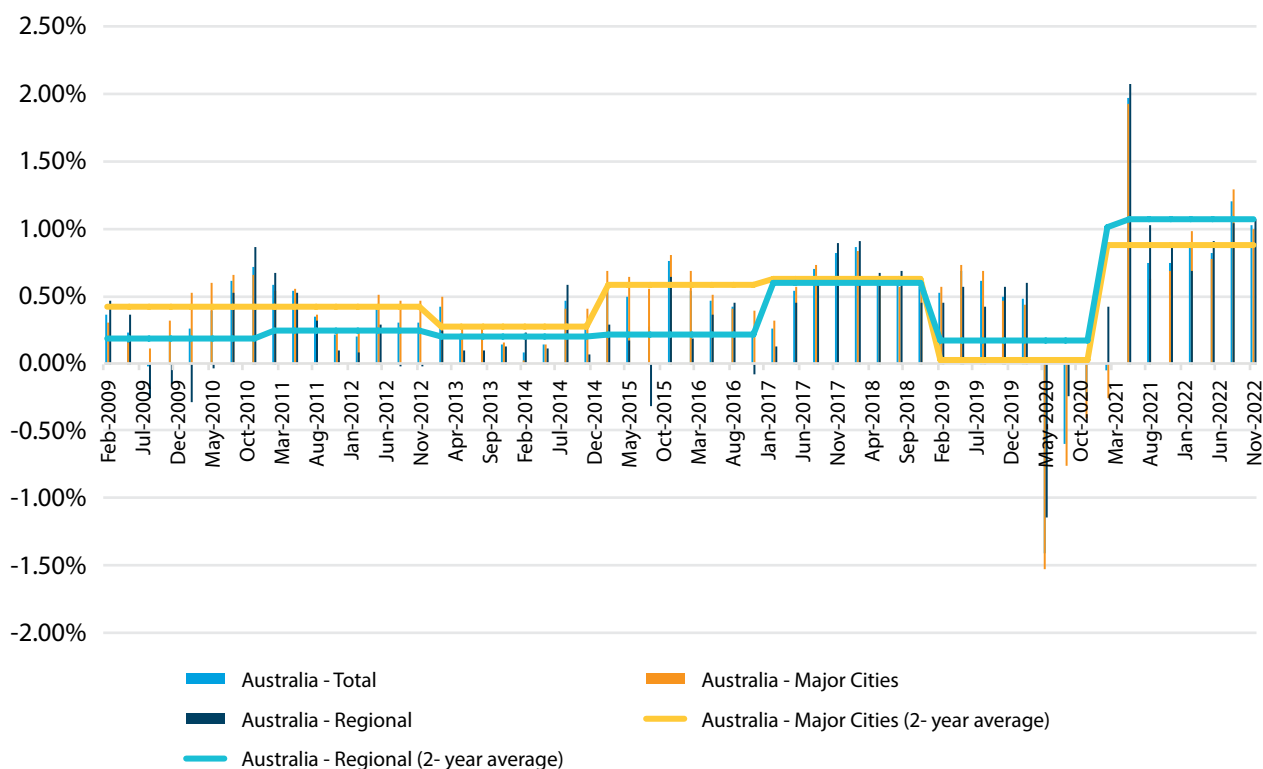
While the Australian Bureau of Statistics does not break down Gross Domestic Product to a regional level, one of the best measures of regional economic growth and prosperity can be found in employment growth.

A close-up photograph of a person's hand wearing a green, textured glove, holding a large bunch of fresh, orange carrots with green leafy tops. The person is wearing blue denim jeans and a green long-sleeved shirt. The background is a blurred outdoor setting.

REGIONAL
EMPLOYMENT

With Covid lockdowns came the well documented shift of population to the regions, either in a work-from-home capacity or looking for new employment in the regions. This saw regional employment perform more strongly through the Covid period than employment in major cities, with the total number of employed in regional Australia growing an average of 0.48 per cent quarter-on-quarter for the two years from the beginning of Covid, compared with total employment in the major cities growing at an average of 0.18 per cent in the same time period. While the greatest falls in employment across the nation were felt in the initial May 2020 quarter, since that time, regional employment growth has outstripped employment growth in the major cities in all but 2 quarters.

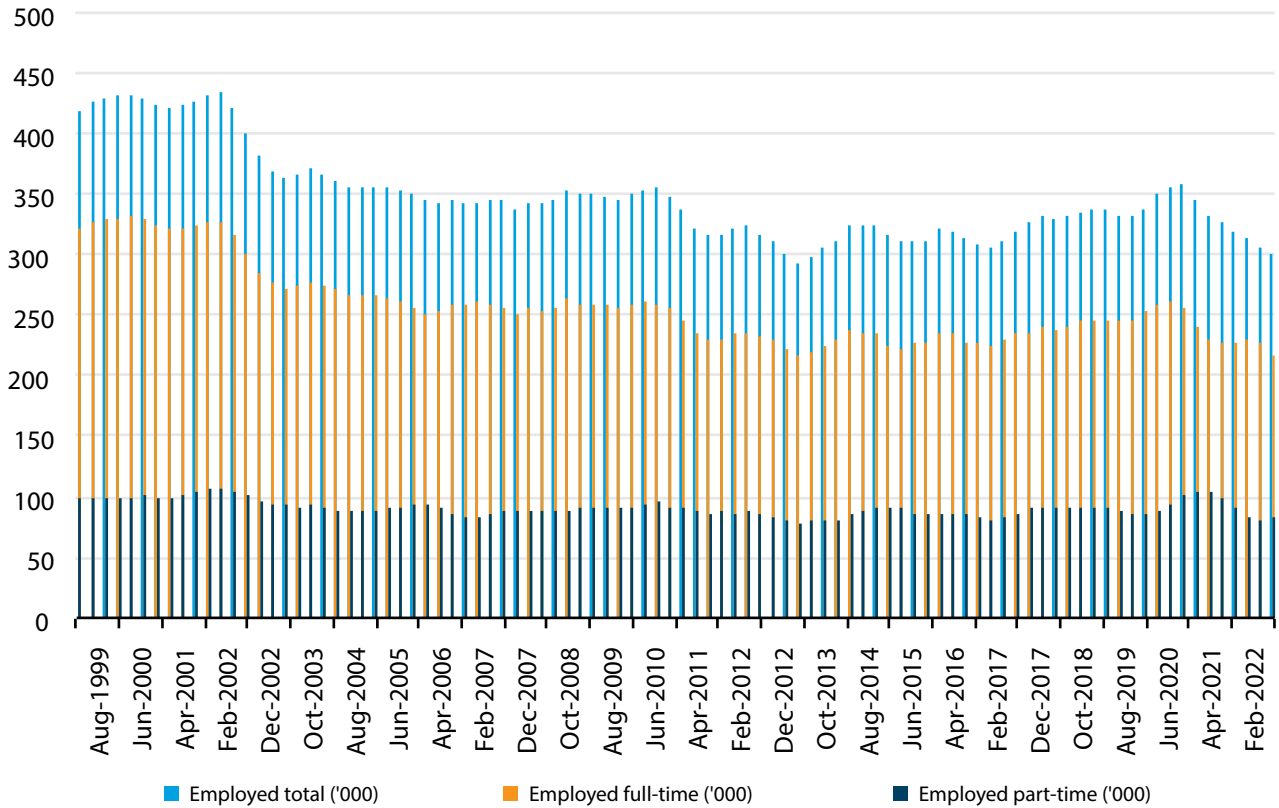
GROWTH IN TOTAL EMPLOYED PERSONS, BY AREA



It may be expected, given the commodity price and production boom, that the agriculture sector would have seen strong increases in employment in that time. However, with covid lockdowns limiting the availability of seasonal workers and workers in particular sectors such as shearing, a lack of available labour has been one of the sticking points for the agriculture sector over the past few years. Data shows that despite some solid growth in the total number of people employed in the agriculture, forestry and fisheries sector in early 2021 – and indeed an upward trend beginning in 2017 – the

past two years have seen a solid decline in the number employed either full time or part time in the sector. What is not clear, however, is whether a reduction in full and part-time jobs in the agriculture sector is due to a lack of vacancies, or a lack of available labour. Given that anecdotally, many producers are struggling to find labour, whether seasonal workers, contract or piece-rate workers or permanent staff, it would appear that the decline in employment numbers in the agriculture sector may, at least in part, be attributable to a lack of availability.

TOTAL EMPLOYED PERSONS - AGRICULTURE, FORESTRY AND FISHERIES



Source: ABS

Employment numbers alone are not the only indicator of the strength of the regional population – it is also worth looking at wage growth, particularly in comparison with wage growth across urban areas. It is most interesting to note the longer-term, wage growth in regional and remote areas is greater in all States and Territories for the five years between 2015 and 2020. The latest data in 2019-20, which covers the first wave of Covid downturns

shows a mixture of wage results where wages in the regional areas of the denser populated, smaller States of Victoria and Tasmania, outstripped their capital cities, while wages in other capital cities exceeded their regional counterparts. While this data does not cover the full Covid period, it does show that the 'regional renewal' which emerged during Covid may have begun even prior to the pandemic.



MEDIAN WAGE GROWTH, TOTAL INCOME EARNERS

	Annual growth 2015-20	Annual growth 2019-20
New South Wales		
Greater Sydney	2.40%	2.19%
Rest of NSW	2.62%	1.71%
Victoria		
Greater Melbourne	2.47%	1.88%
Rest of Vic.	3.50%	2.23%
Queensland		
Greater Brisbane	2.21%	1.98%
Rest of Qld	2.38%	1.73%
South Australia		
Greater Adelaide	2.34%	1.44%
Rest of SA	2.40%	0.40%
Western Australia		
Greater Perth	1.23%	2.18%
Rest of WA	1.50%	0.31%
Tasmania		
Greater Hobart	1.71%	0.54%
Rest of Tas.	2.84%	1.82%
Northern Territory		
Greater Darwin	0.64%	-0.03%
Rest of NT	1.52%	3.24%
Australian Capital Territory	2.09%	2.60%

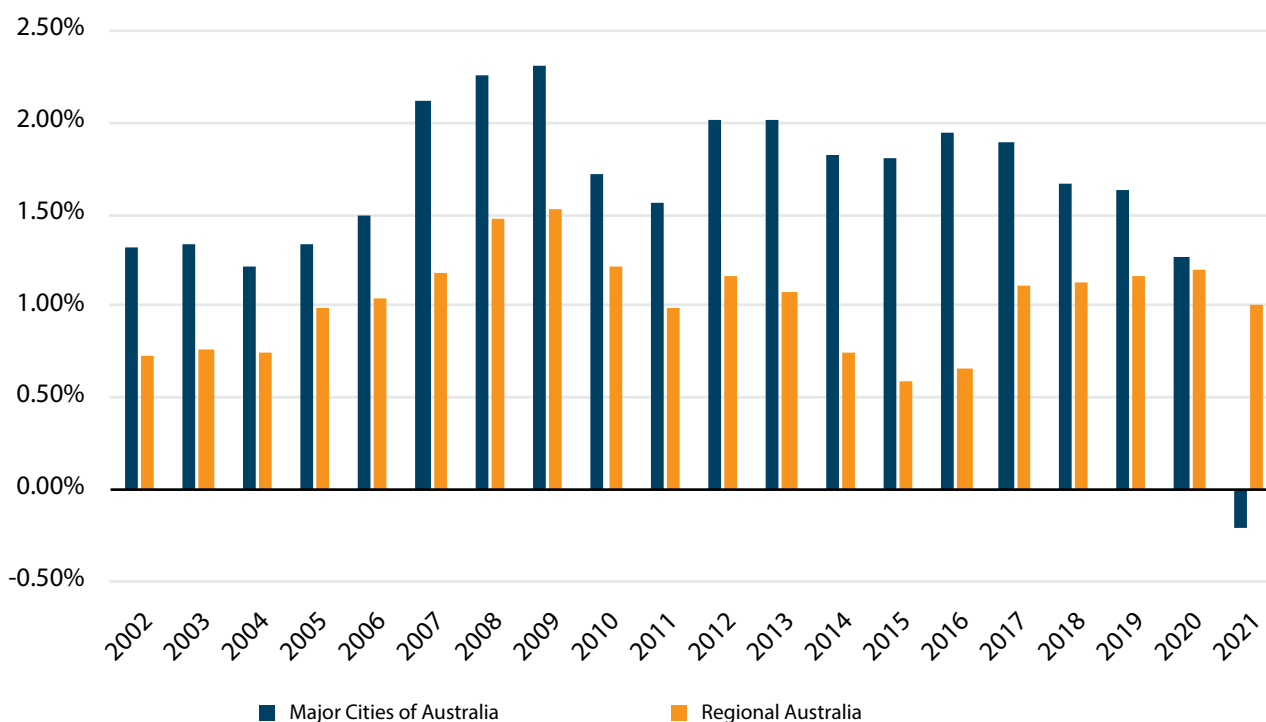
Source: ABS

REGIONAL
POPULATION



Perhaps the most noteworthy impact of the Covid pandemic was the shift in population growth in the regions and away from major cities. In 2020-21, the population of Australia's major cities fell by 0.21 per cent, compared with an increase of 1 per cent, or 72,000 people, in regional Australia. Melbourne suffered the greatest falls in population, perhaps due to the protracted nature of lockdowns, while regional New South Wales and Queensland saw the strongest uptick in population growth. And while this was clearly below average for Australian major cities, the population growth in regional Australia was in line with the 10-year average. Over the longer-term, population growth in the major cities has grown at an average of 1.6 per cent per annum over 10 years and regional Australian growth has averaged 1 per cent per annum. Notably, however, there is also a longer-term decline in population in remote and very remote areas of Australia.

AUSTRALIAN POPULATION GROWTH BY AREA



So is the trend to the regions a long-term shift, or simply a temporary response to Covid lockdowns? It's fairly clear that the increase in remote working and working-from-home will result in greater flexibility and attractiveness for people to work in regional Australia, however as international migration resumes, there will be a greater pick-up in population growth in the major cities. Perhaps one of the greatest factors impeding

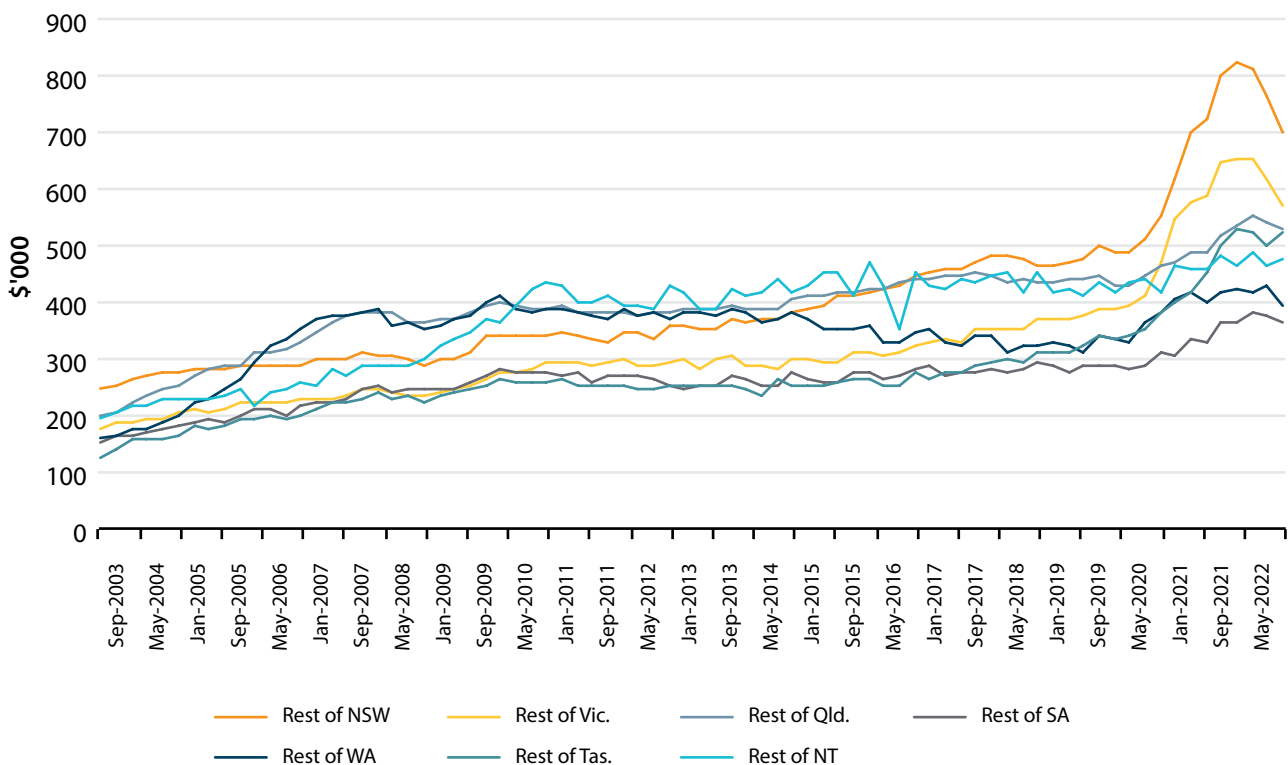
long-term growth in the regions is the perception of a lack of services in many parts of regional Australia, whether that be telecommunications, health, education or transport. This trend is held up in the ten-year trend where population growth in regional New South Wales and Victoria is almost equal to that of Sydney and Melbourne, while the population growth in the regional areas of larger, sparser States such as Queensland is far

less than that of Brisbane. It's also important to note that regional population growth is focussed very heavily on growth in inner regional areas – not in rural or remote areas. The conclusion can be drawn that most regional population growth can be seen in major regional cities, and those within a reasonable commute to capital cities. Expanding this growth to rural and remote areas is likely to require significant additional investment in transport and other services infrastructure, to maintain the service level seen in major cities and now increasingly in large regional cities.

While the regional population boom has been put primarily down to Covid lockdowns, the long-term trend appears to be for greater population growth in those regional centres within travelling distance of major cities and with a certain level of service delivery. As a result, house prices across regional areas have also boomed

– particularly during the Covid period – and although house prices have dropped in recent months, they remain strongly above pre-Covid prices. However, the performance of regional house prices is mixed between States with regional house prices in New South Wales, Victoria and Tasmania outperforming their respective capital city house price increases compared to pre-Covid prices. In all other States and Territories, major city house prices have performed more strongly than the regions over the Covid period. That trend, while exacerbated by Covid, is also replicated over the longer-term with regional Victorian house prices growing at a faster pace than Melbourne while prices in regional New South Wales and Tasmania also grew almost in line with their capital cities. In all other States and Territories, regional house prices have significantly underperformed capital city house prices in the past 10 years.

MEDIAN PRICE OF AN ESTABLISHED HOUSE



Source: ABS, ANZ

The Covid pandemic has highlighted the strength of Australia's regional and rural areas at a time where our major cities have had a significant setback. It has also revealed a series of trends towards growing wages, employment, population and house prices across many regional areas. However this cannot be claimed to be a nation-wide trend – with the regional boom over both

Covid and in the longer-term being concentrated in the larger and denser populated States. Regardless, it does reveal both a willingness and desire for people to move to, or stay in, the regions – in contrast to the common belief that regional Australia was suffering from 'brain drain'. The question is how to capitalise on these opportunities and ensure that all regions can benefit.

CONTACTS

MARK BENNETT

Head of Agribusiness & Specialised Commercial,
Australia Commercial

T: +61 3 8655 4097

E: mark.bennett@anz.com

GERIUS KARAM

Head of Food, Beverage & Agribusiness,
Australia – Institutional Banking

T: +61 466 931 569

E: gerius.karam@anz.com

CONTRIBUTORS

MADELEINE SWAN

Associate Director Agribusiness Research,
Australia Commercial

T: +61 419 897 483

E: madeleine.swan@anz.com

DISCLAIMER

The distribution of this document or streaming of this video broadcast (as applicable, "publication") may be restricted by law in certain jurisdictions. Persons who receive this publication must inform themselves about and observe all relevant restrictions.

1. Disclaimer for all jurisdictions, where content is authored by ANZ Research:

Except if otherwise specified in section 2 below, this publication is issued and distributed in your country/region by Australia and New Zealand Banking Group Limited (ABN 11 005 357 522) ("ANZ"), on the basis that it is only for the information of the specified recipient or permitted user of the relevant website (collectively, "recipient"). This publication may not be reproduced, distributed or published by any recipient for any purpose. It is general information and has been prepared without taking into account the objectives, financial situation or needs of any person. Nothing in this publication is intended to be an offer to sell, or a solicitation of an offer to buy, any product, instrument or investment, to effect any transaction or to conclude any legal act of any kind. If despite the foregoing, any services or products referred to in this publication are deemed to be offered in the jurisdiction in which this publication is received or accessed, no such service or product is intended for nor available to persons resident in that jurisdiction if it would be contradictory to local law or regulation. Such local laws, regulations and other limitations always apply with the non-exclusive jurisdiction of local courts. Before making an investment decision, recipients should seek independent financial, legal, tax and other relevant advice having regard to their particular circumstances.

The views and recommendations expressed in this publication are the authors. They are based on information known by the author and on sources that the author believes to be reliable but may involve material elements of subjective judgement and analysis. Unless specifically stated otherwise: they are current on the date of this publication and are subject to change without notice; and, all price information is indicative only. Any of the views and recommendations which comprise estimates, forecasts or other projections, are subject to significant uncertainties and contingencies that cannot reasonably be anticipated. On this basis, such views and recommendations may not always be achieved or proven to be correct. Indications of past performance in this publication will not necessarily be repeated in the future. No representation is being made that any investment will or is likely to achieve profits or losses similar to those achieved in the past, or that significant losses will be avoided.

Additionally, this publication may contain 'forward-looking statements'. Actual events or results or actual performance may differ materially from those reflected or contemplated in such forward-looking statements. All investments entail a risk and may result in both profits and losses. Foreign currency rates of exchange may adversely affect the value, price or income of any products or services described in this publication. The products and services described in this publication are not suitable for all investors, and transacting in these products or services may be considered risky. ANZ and its related bodies corporate and affiliates, and the officers, employees, contractors and agents of each of them (including the author

("Affiliates"), do not make any representation as to the accuracy, completeness or currency of the views or recommendations expressed in this publication. Neither ANZ nor its Affiliates accept any responsibility to inform you of any matter that subsequently comes to their notice, which may affect the accuracy, completeness or currency of the information in this publication.

Except as required by law, and only to the extent so required: neither ANZ nor its Affiliates warrant or guarantee the performance of any of the products or services described in this publication or any return on any associated investment; and, ANZ and its Affiliates expressly disclaim any responsibility and shall not be liable for any loss, damage, claim, liability, proceedings, cost or expense ("Liability") arising directly or indirectly and whether in tort (including negligence), contract, equity or otherwise out of or in connection with this publication.

If this publication has been distributed by electronic transmissions such as e-mail, then such transmission cannot be guaranteed to be secure or error-free as information could be intercepted, corrupted, lost, destroyed, arrive late or incomplete, or contain viruses. ANZ and its Affiliates do not accept any liability as a result of electronic transmission of this publication.

ANZ and its Affiliates may have an interest in the subject matter of this publication as follows:

- They may receive fees from customers for dealing in the products or services described in this publication, and their staff and introducers of business may share in such fees or receive a bonus that may be influenced by total sales.
- They or their customers may have or have had interests or long or short positions in the products or services described in this publication, and may at any time make purchases and/or sales in them as principal or agent.
- They may act or have acted as market-maker in products described in this publication.

ANZ and its Affiliates may rely on information barriers and other arrangements to control the flow of information contained in one or more business areas within ANZ or within its Affiliates into other business areas of ANZ or of its Affiliates.

Please contact your ANZ point of contact with any questions about this publication including for further information on these disclosures of interest.

2. Country/region specific information:

Australia. This publication is distributed in Australia by ANZ. ANZ holds an Australian Financial Services Licence no. 234527. A copy of ANZ's Financial Services Guide is available at <http://www.anz.com/documents/AU/aboutANZ/FinancialServicesGuide.pdf> and is available upon request from your ANZ point of contact. If trading strategies or recommendations are included in this publication, they are solely for the information of 'wholesale clients' (as defined in section 761G of the Corporations Act 2001 Cth). Persons who receive this publication must inform themselves about and observe all relevant restrictions.

